

Visioffice[®] 2

powered by *Activisu*[®]

January 2016 | Software Update



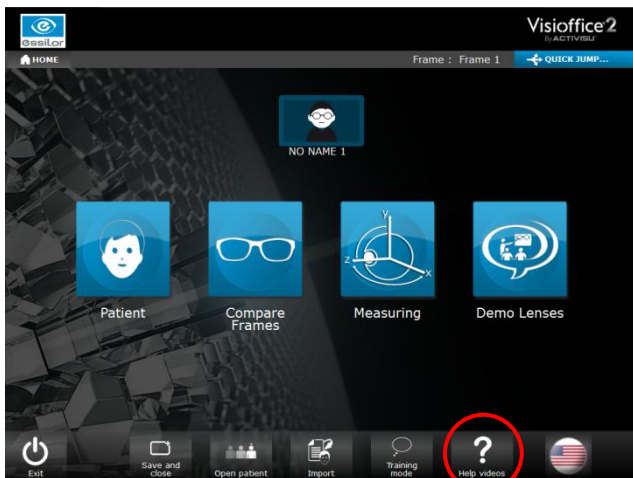
Visioffice® 2 Software Version 2.5.57

This January, the Visioffice® 2 system will update to the latest software version, **2.5.57**. Improvements in this version include general software fixes and **new help videos** to help you take the most accurate measurements possible.



ACCESSING THE VIDEOS

- The help videos are located in the **bottom right corner** in the bottom menu on the home screen. They can also be accessed on any screen from the **Quick Jump** link on the upper right corner.



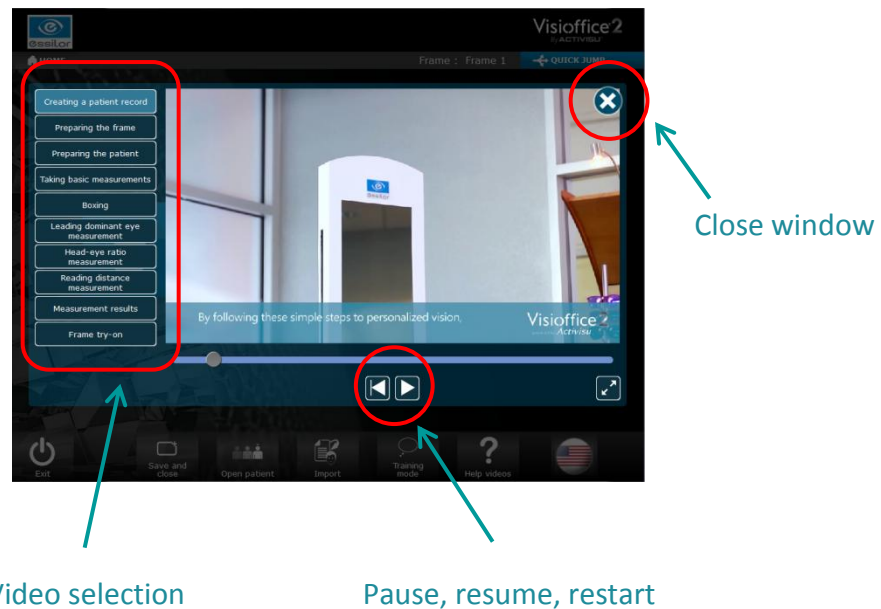
Help videos from Home menu



Help videos from Quick Jump

A pop up window will appear and let you select the help video you want to watch. Under the video, you can pause, resume and restart the video. The help videos **do not have audio**, they will only play with subtitles.

Click on the cross at the top right corner to exit the help videos window.



AVAILABLE CONTENT

- The help videos follow the **Visioffice® 2 System Measuring Book** so you can perform the right steps when using the software. The following help videos are available:

Creating a patient record
Preparing the frame
Preparing the patient
Taking basic measurements
Boxing
Leading dominant eye measurement
Reading distance measurement
Measurement results
Frame try-on

ADDITIONAL SOFTWARE FIXES

- Measurement results synchronization for consistency across print templates
- Optimizations and stabilizations to improve software performance

How Do I Get The Update?

It's easy! Once available, the Visioffice® 2 system will **automatically begin downloading** the installation package via your active internet connection. Once the software download has completed, a **notification will appear** on the touch screen to guide you through finalizing the software installation. Once this process has completed, you may **open the Visioffice® software** and have access to these new features.

If your Visioffice® 2 is not connected to the internet, you will be required to contact the Visioffice® Equipment Group to arrange for an offline installation.

How Do I Know Which Version I Have?

To verify which version of Visioffice® 2 software you have currently, simply press the **Visioffice® 2 icon** at the top left of the screen, or the **Essilor icon** at the top right. This will display the current version number.

Learn More

More information about the Visioffice® 2 system and its features can be found online at www.EssilorVisioffice.com.

For any technical issues regarding your Visioffice® 2 system or this update, please contact the **Visioffice® Technical Support** at **877-457-3760**, or via email at visioffice@essilorusa.com.



[/VisiofficeUSA](https://www.youtube.com/VisiofficeUSA)